

ROYAL PRINCESS CARIBBEAN CRUISE

FEBRUARY 15 – 23, 2014

<u>Cat</u>	<u>Description</u>	<u>Price</u>	<u>Cat</u>	<u>Description</u>	<u>Price</u>
MB	Mini Suite	\$3029	DC	Balcony	\$2779
MC	Mini Suite	\$2929	BC	Balcony	\$2679
DB	Balcony	\$2829	IB	Inside	\$2229

***Price is based on double occupancy/person.**

Prices above include air travel, transfers, government fees & taxes, luggage handling, entertainment and all meals aboard ship. (Optional land tours available at additional cost). Does not include airline baggage fees.

Additional Five Points Bank Benefits: Roundtrip motor coach pick up to Omaha, Private cocktail party on board the ship, Pre-night lodging in Fort Lauderdale with day tour on the 16th, Escorted. An optional city tour of St Thomas with stop at Spectrum Jewelry Store is available at no charge.

**** Please note that a passport is required for this cruise.**

IMPORTANT RESERVATION INFORMATION

A deposit of \$650 per person must be paid at time of booking. The balance will be due approximately 90 days prior to departure (on or around November 4, 2013). Payment may be made by check to: Five Points Bank. Visa or MasterCard may be used for payment. Reservations through October 15, 2013 or as space is available. Space is limited, so we suggest you make reservations early.

CANCELLATION CHARGES:

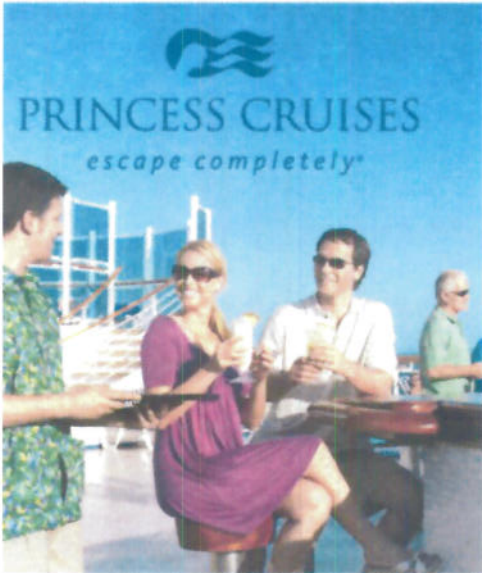
75 days or more	None
74 – 57 days	Deposit
56 – 29 days	50%
28 - 15	75%
Within 14 days	100%

Medical and Cancellation Travel Protection is included in the above price and covers you in the event that a medical condition to you, your traveling companion or immediate family member prohibits you from traveling.

RESPONSIBILITY NOTICE: Five Points Bank, Gannon Travel Associates, Bus Companies, Airlines, and any other tour companies, etc., used in these itineraries act only as agents for the owners and/or contractors providing means of transportation or other services and do not assume responsibility or liability for any loss, injury, or damage to or in respect to any person or property however caused or arising. The above companies further accept no responsibility for losses, additional expenses due to delays or changes in bus, or other services, sickness, weather or strikes, or other causes. All such losses or expense will have to be borne by the passenger. The responsibility of the transportation companies is limited in accordance with their respective passage contracts. No revisions to these prices or itineraries are planned; however, the right to do so is maintained. The right is also maintained to retain or decline membership to any person in this tour either before or during the trip. The airlines/ship lines and/or bus lines concerned as well as Five Points Bank and Gannon Travel Associates are not to be held responsible for any act, omission, or event during the time passengers are not on board their buses/aircraft/vessels. Application for reservation on any of our tours, indicates full acceptance of the foregoing conditions.

FOR MORE INFORMATION OR TO MAKE RESERVATIONS

CALL DEB LUKES AT 389-8760.



CRUISE ITINERARY

Itinerary*

<u>Day</u>	<u>Port /</u>	<u>Arrive</u>	<u>Depart</u>
1	<u>Ft. Lauderdale, Florida overnight</u>		TBA
2	Included tour in the area, then to ship		TBA
3	Princess Cays	9:00 A.M.	5:00 P.M.
4	At Sea		
5	<u>St. Thomas</u>	8:00 AM	6:00 PM
6	<u>St. Marten</u>	7:00 AM	6:00 PM
7	At Sea		
8	At Sea		
9	<u>Ft. Lauderdale, Florida</u>	7:00 AM	

*Included roundtrip motorcoach from Grand Island and roundtrip air from Omaha is not shown in the itinerary.

**Optional tour of St. Thomas and stop at Spectrum Jewellery is available compliments of Spectrum.

YOUR SHIP

Royal Princess® – Arriving June 2013!

The next generation of Princess Cruises ships

Joining the fleet in June 2013, the new Royal Princess® is sure to delight its 3,600 passengers with exciting new innovations and signature features. **Among her highlights, the new Royal Princess will offer:**

- An even larger and expanded atrium with additional entertainment and casual dining options.
- Our largest top deck pool ever with a water & light show, an enhanced Movies Under the Stars® screen, and the new SeaWalkSM with views 128 feet straight down!
- Balconies on all outside staterooms.

*Bermudan Registry

YOUR DESTINATION

Eastern Caribbean Cruises

Amid the swaying palm trees, velveteen sands and crystal-clear Caribbean beach waters, proudly stand spectacular colonial architectures with distinct European flavor. So after sunbathing and snorkeling, there's still a wealth of historical treasures for you to explore on an Eastern Caribbean cruise vacation.

YOUR HOST

Deb Lukes has been escorting tours for over twenty years including groups with Princess on several occasions. What better way to travel to the Caribbean than with someone who knows the ins and outs of Princess. If you have a concern, she is there to take care of it on the spot so you can travel worry free.



PRINCESS CRUISES

escape completely®